



1501X Paper Folder



Folds
3.5" x 5" to 8 3/4" x 14"

Paper Weights
16# Bond to 28# Bond
60 gsm to 105 gsm

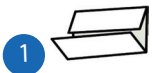
- Great to use in large mailrooms, offices, churches, schools, businesses and associations
- Operates at a speed of up to 7,500 sheets per hour
- Feed table capacity of 167 sheets of 20# or 1/2" stack height.
- Stapled sets of up to 3 sheets can be folded by hand-feeding documents into the feed table bypass

SPECIFICATIONS:

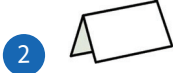
Model No.:	1501X
Benchmark Speed: (sheets/hr.)	7,500
Standard Paper Size: (inch/metric)	8.5" x 11", 8.5" x 14" A4, A5
Manual Paper Weight: (up to sheets)	60 gsm to 105 gsm 16# bond to 28# bond
Manual Paper Feed: (up to sheets)	3
Feed Tray Capacity: (up to sheets)	150
Power (volts)	115/230
Dimensions: (W x D x H approx. inch)	24 x 15 x 16
Weight: (approx. ounces/lbs.)	31

Fold Types: **1** **2** **3** **4** **5**

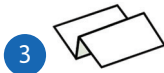
Letter Fold



Half Fold



Z-Fold



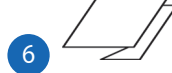
Double Parallel Fold



Gate Fold



Engineering Fold



Church Fold

